

MONTHLY MEMBERSHIP PROGRESS REPORT

District 120

Results as of: 8/31/2024

GMT:

LOCATION ESTONIA

GMT CA

Clubs			
RESULTS FOR 2024-2025			
QUARTER	NEW CLUB GOAL	NEW CLUBS	DROPPED CLUBS
JULY/AUG/SEPT	0	0	0
OCT/NOV/DEC	1	0	0
JAN/FEB/MAR	0	0	0
APR/MAY/JUNE	0	0	0

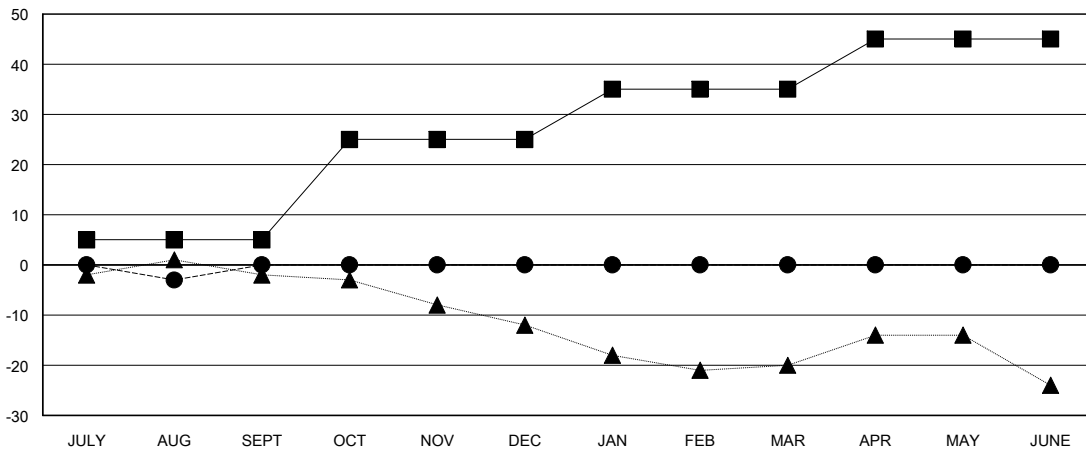
Members			
RESULTS FOR 2024-2025			
QUARTER	MEMBER GROWTH NET GOAL	MEMBER GROWTH ACTUAL	DROPPED MEMBERS ACTUAL (including transfers)
JULY/AUG/SEPT	5	0	3
OCT/NOV/DEC	20	0	0
JAN/FEB/MAR	10	0	0
APR/MAY/JUNE	10	0	0

GOALS AND ACTUAL NEW CLUBS CUMULATIVE



- - CURRENT YEAR GOALS FOR NEW CLUBS
- - CURRENT YEAR ACTUAL NEW CLUBS
- ▲ - LAST YEAR ACTUAL NEW CLUBS

GOALS AND ACTUAL MEMBERS CUMULATIVE



- - MEMBER GROWTH NET GOAL
- - MEMBER GROWTH ACTUAL
- ▲ - LAST YEAR MEMBERSHIP ACTUAL

DROPPED CLUBS: 0	0 CLUBS OF 60 ADDED 1 OR MORE NEW MEMBERS	GENDER DISTRIBUTION MALE 713 (65.17%) FEMALE 381 (34.83%)
DROPPED MEMBERS DECEASED 1 CLUB CANCELLED 0 OTHER 2 TOTAL 3	CLICK HERE FOR CUMULATIVE MEMBERSHIP DATA	TOTAL FAMILY UNIT MEMBERS 80 FAMILY MEMBERS PAYING HALF DUES 41